

Updating Oregon's Sage-Grouse Core and Low-Density Maps

December 15, 2023



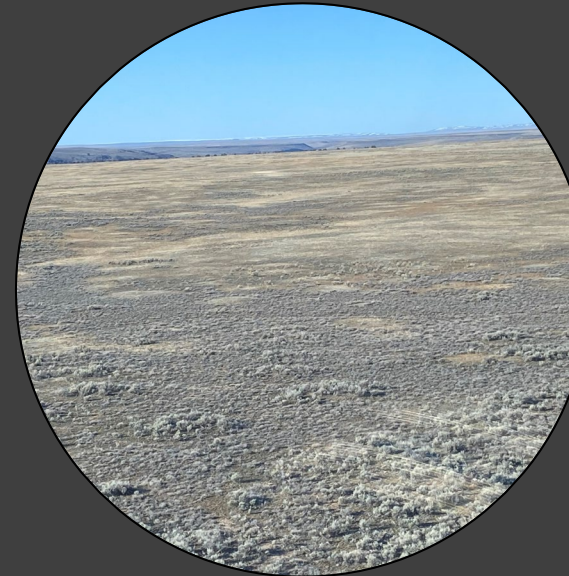


What are these habitats?



Core

Habitats necessary to conserve **90%** of Oregon's sage-grouse populations

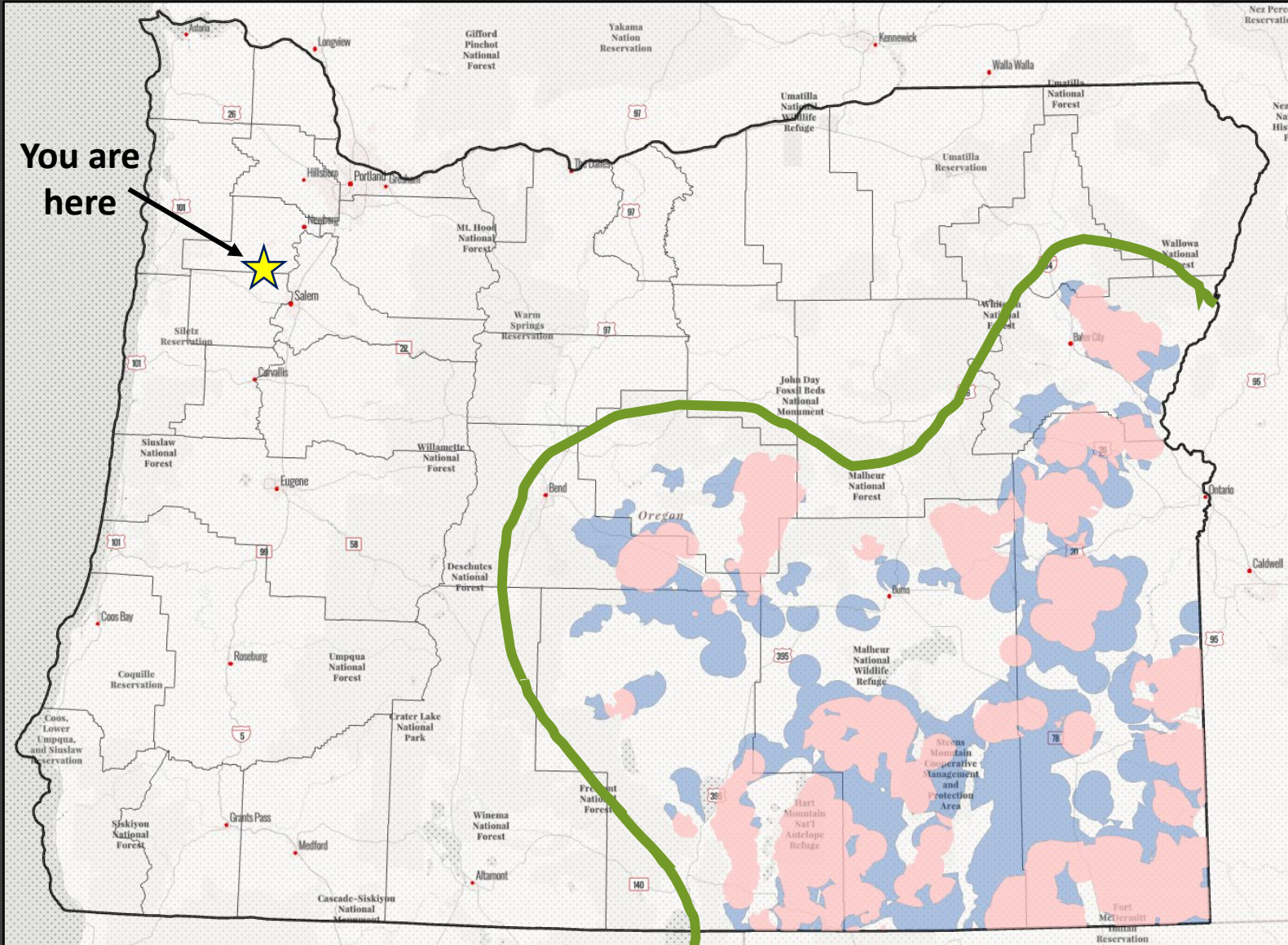


Low-Density

Areas which provide additional breeding, summer, and migratory habitats



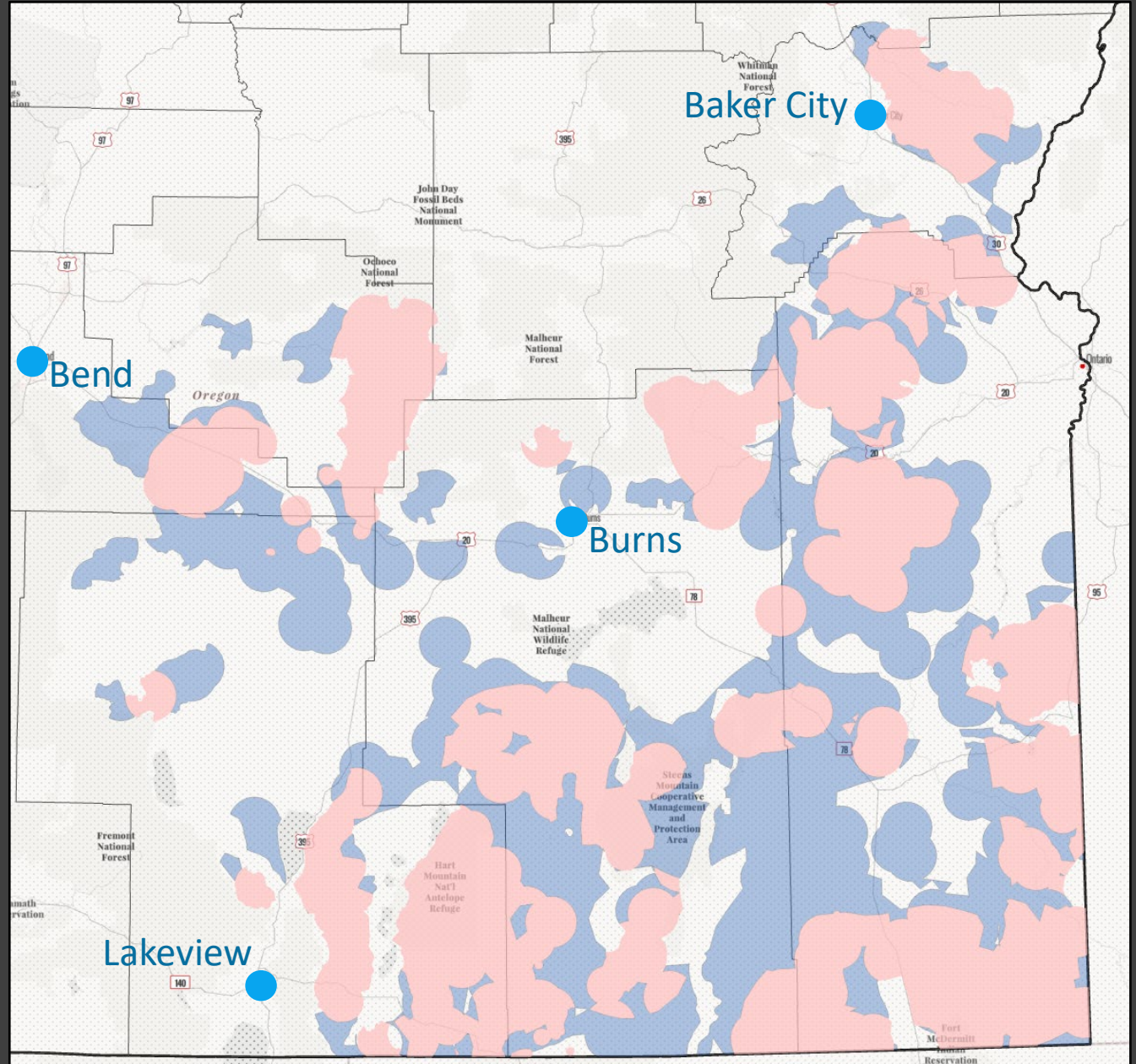
Sage-grouse habitat is concentrated in SE Oregon





Existing map,
in place since
2011

- *Core*
- *Low-Density*





Why is this map so important?

Used to inform:



Conservation Actions

Grant funding, project siting, NRCS programs



Land Use

OAR 635-140-0000 – 0025

OAR 660-023-0115:
Greater Sage-Grouse

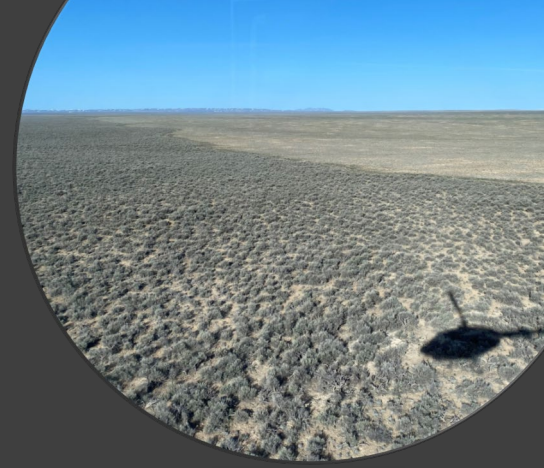
Photo: Bend Bulletin,
Dean Guernsey



Why update now?

New information

- Over **150** new leks discovered
- Over **1 million** new sage-grouse GPS locations
- New sage-grouse habitat suitability models available
- Align with BLM's Sage-Grouse planning process



The Update Process

Phase 1: Incorporate new data into the model

(March–Dec 2022)



Breeding habitat



Photo: Roula Loew

+

Migratory habitat



Photo: Roula Loew

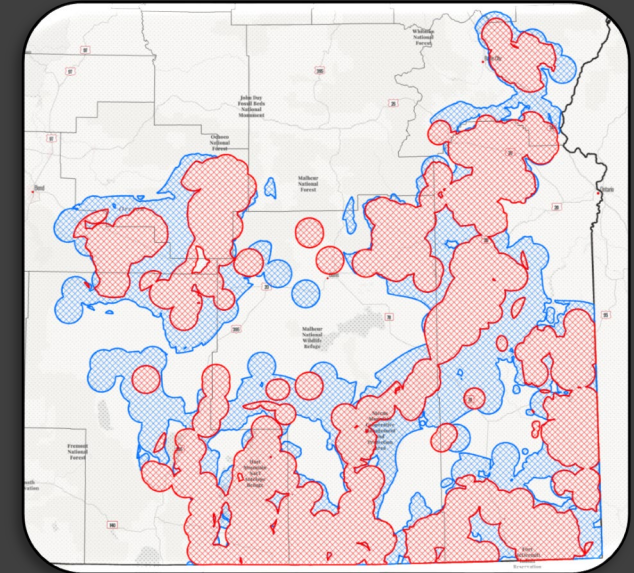
+

Winter habitat



=

New draft map



The Update Process

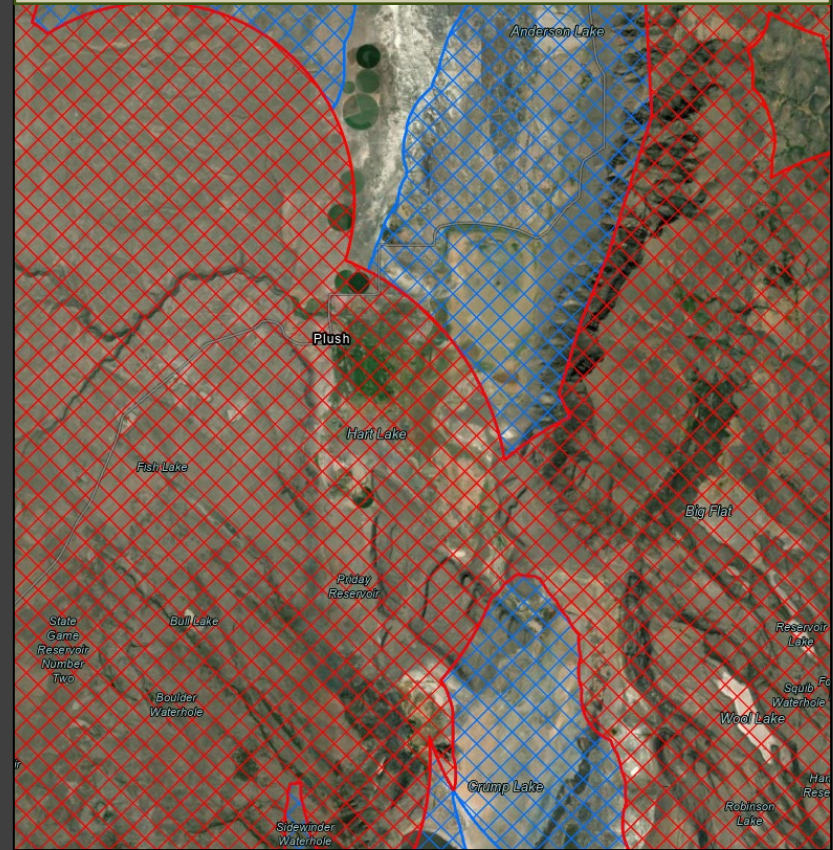
Phase 2: Internal & Cooperating Agency Review

(January–June 2023)

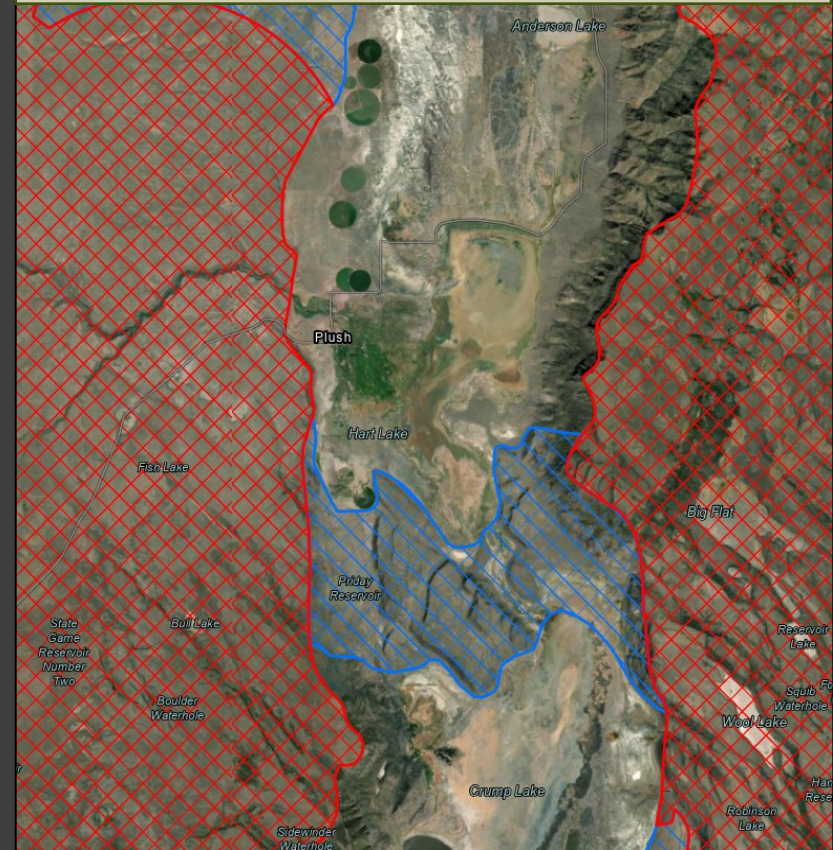


Example near Plush

As modeled



After review



Core



Low Density

The Update Process

Phase 3: County, Partner, and Public Review (July–Nov 2023)



Many ways to provide input

- Public meetings
- Commission meetings
- LIT meetings
- Written comments

We considered and responded to all comments

Prineville

- Public
- Commission
- LIT

Bend

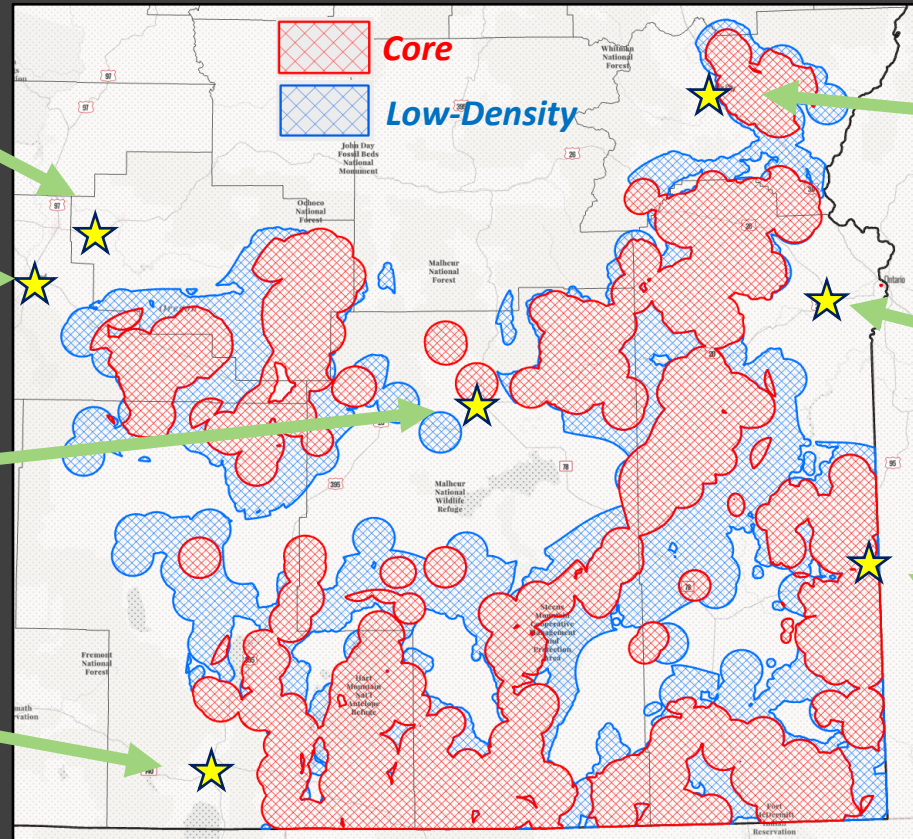
- Public

Burns

- Public / Commission
- LIT

Lakeview

- Public
- Commission
- LIT



Baker City

- Commission
- Public / LIT

Vale

- Commission
- Public / LIT

Jordan Valley

- Public / LIT

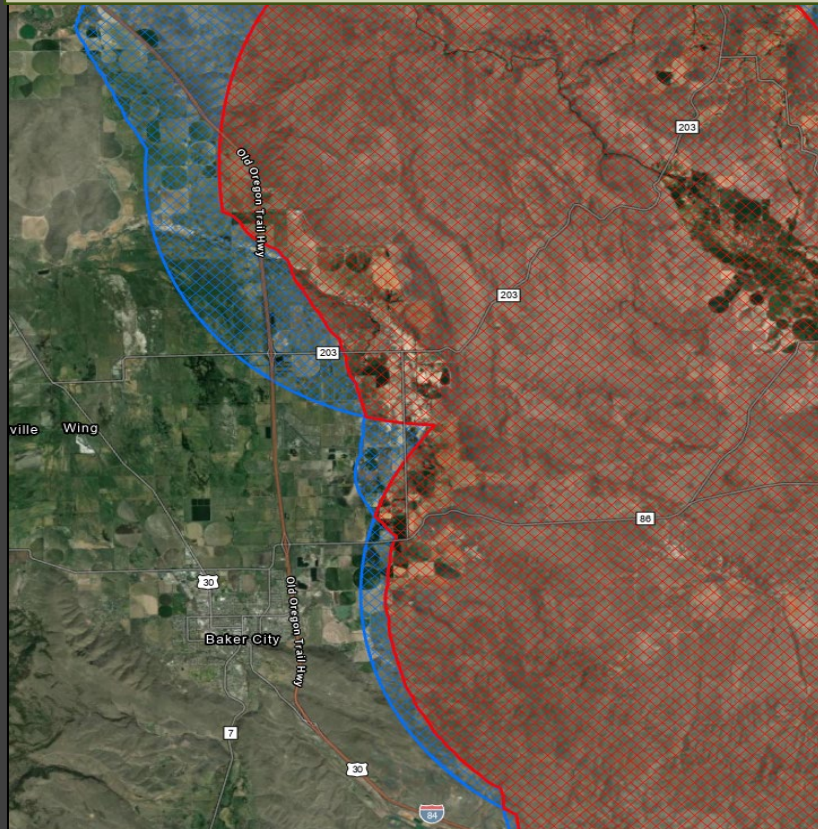
The Update Process

Phase 3: Example

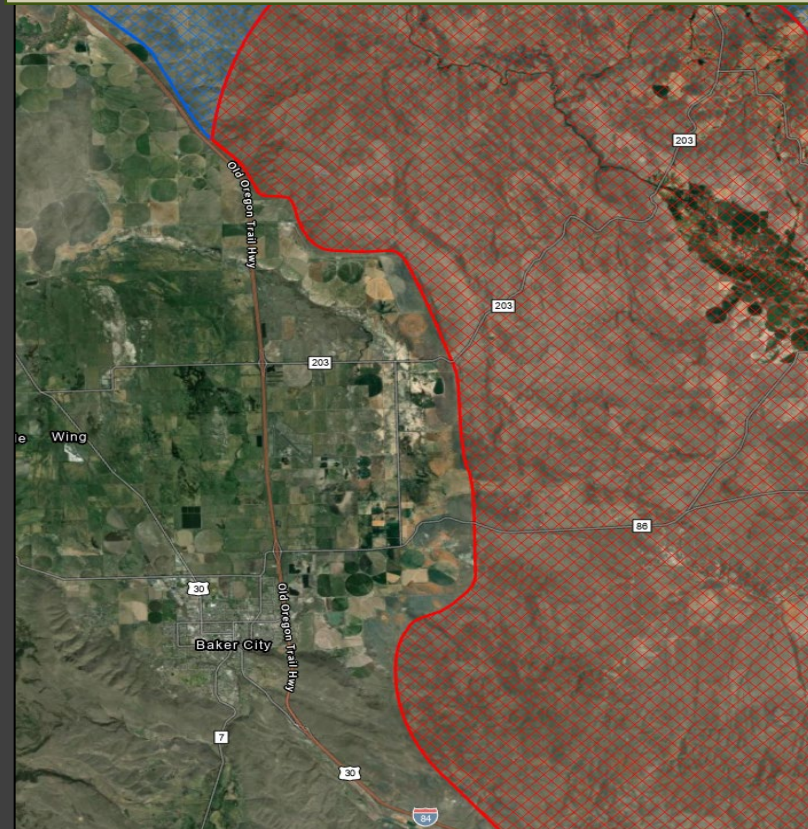


Example near Baker City

As modeled



After review



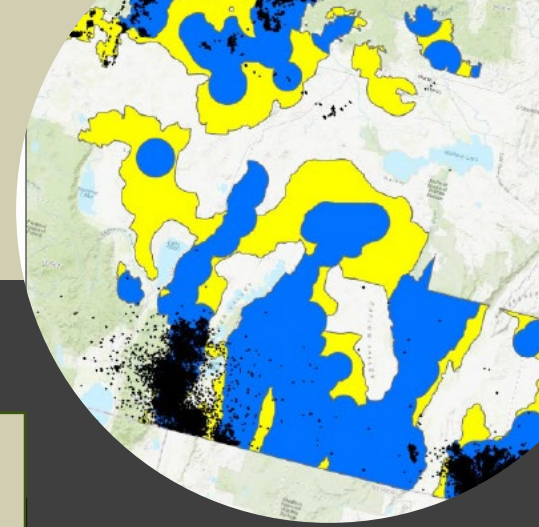
Core



**Low
Density**

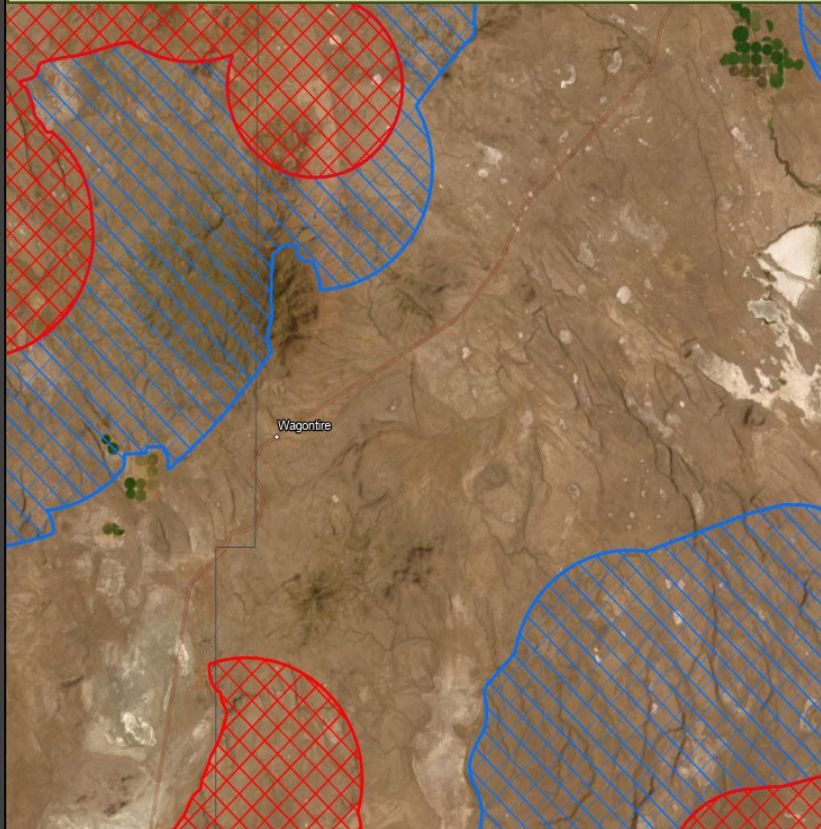
The Update Process

Phase 3: Example

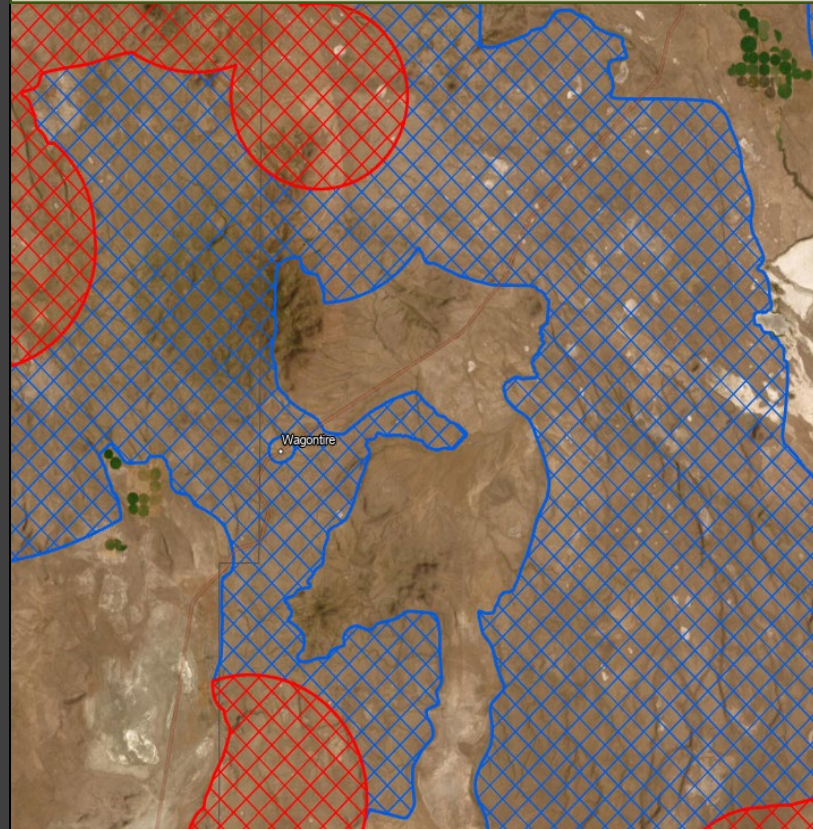


OSU Data, ONDA Comments

1st Draft



After review



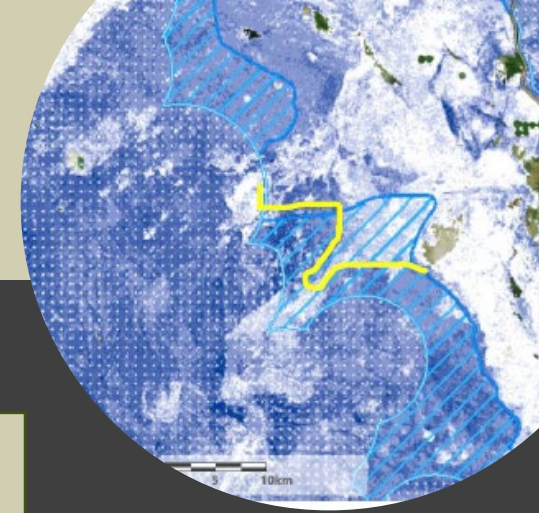
Core



**Low
Density**

The Update Process

Phase 3: Example



Roaring Springs Ranch Comments

1st Draft



After review



Core



**Low
Density**

The Finished Product

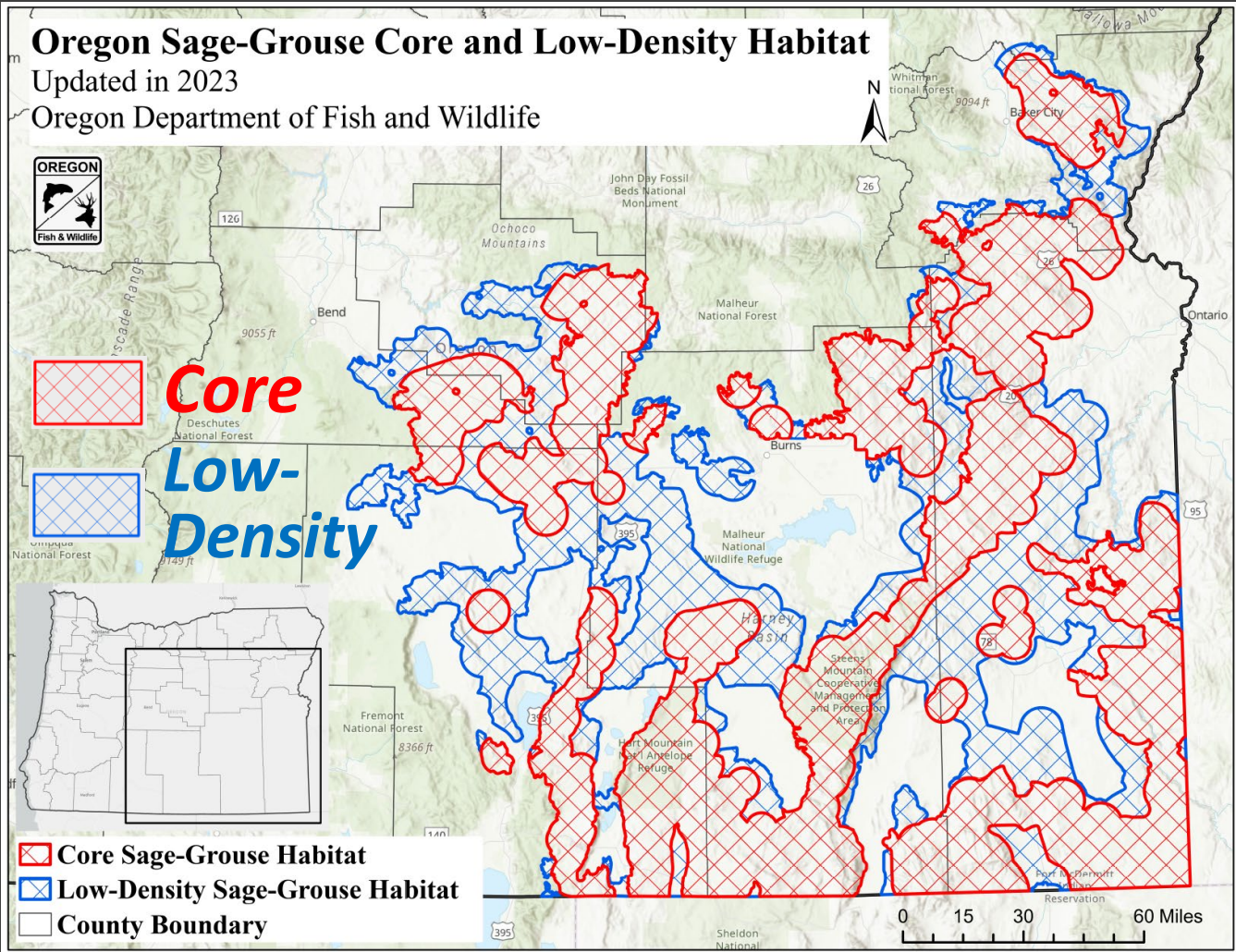


Photo: Keith Kohl



The Proposed Map has:

More core habitat than 2011 map

~92% of addition is on public land

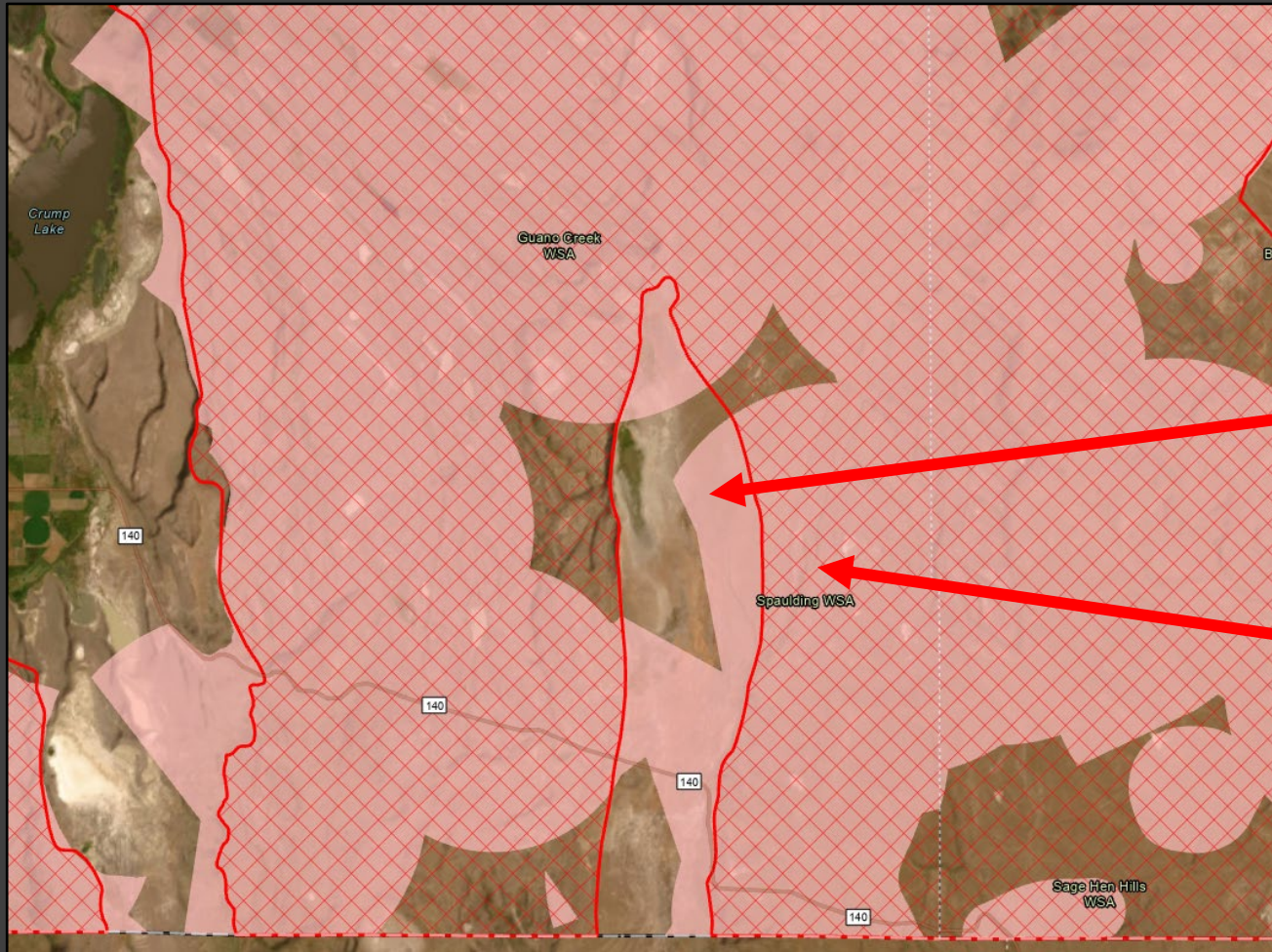
Less low-density habitat than 2011 map



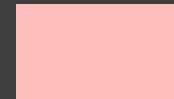
	2011	2023	Difference
Core Habitat	6,565,569 acres	7,946,323 acres	1,380,754 acres
Low-Density	5,264,877 ac	4,801,814 ac	-463,063 ac
Total	11,830,446 ac	12,748,137 ac	917,691 ac



Updated map is much finer resolution



2011
Core

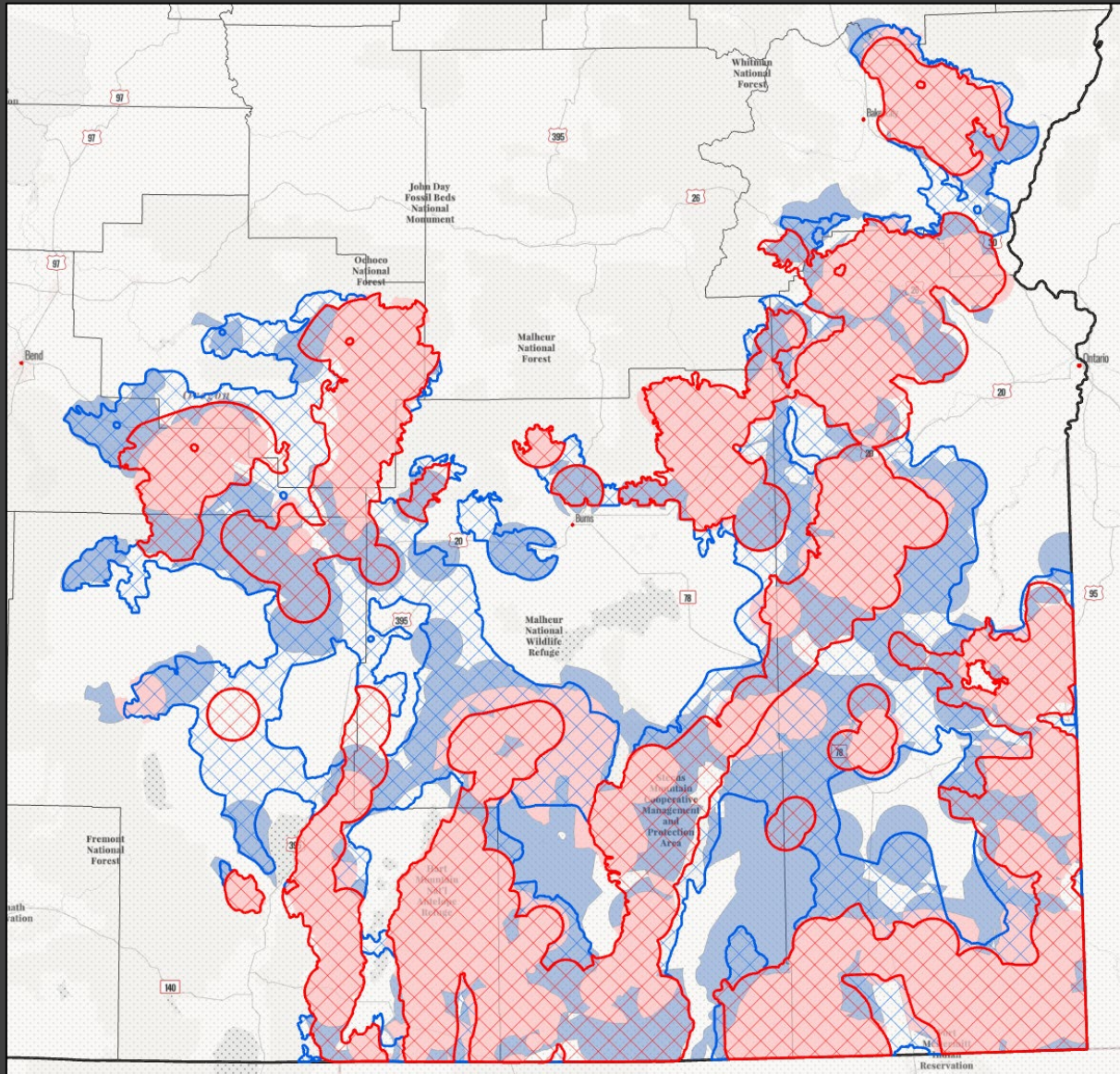


Revised
Core





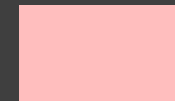
The Key Differences



Bottom layers are the current map

2011

Core



2011

Low-Density



Top layers (hashed) are proposed map

Revised

Core



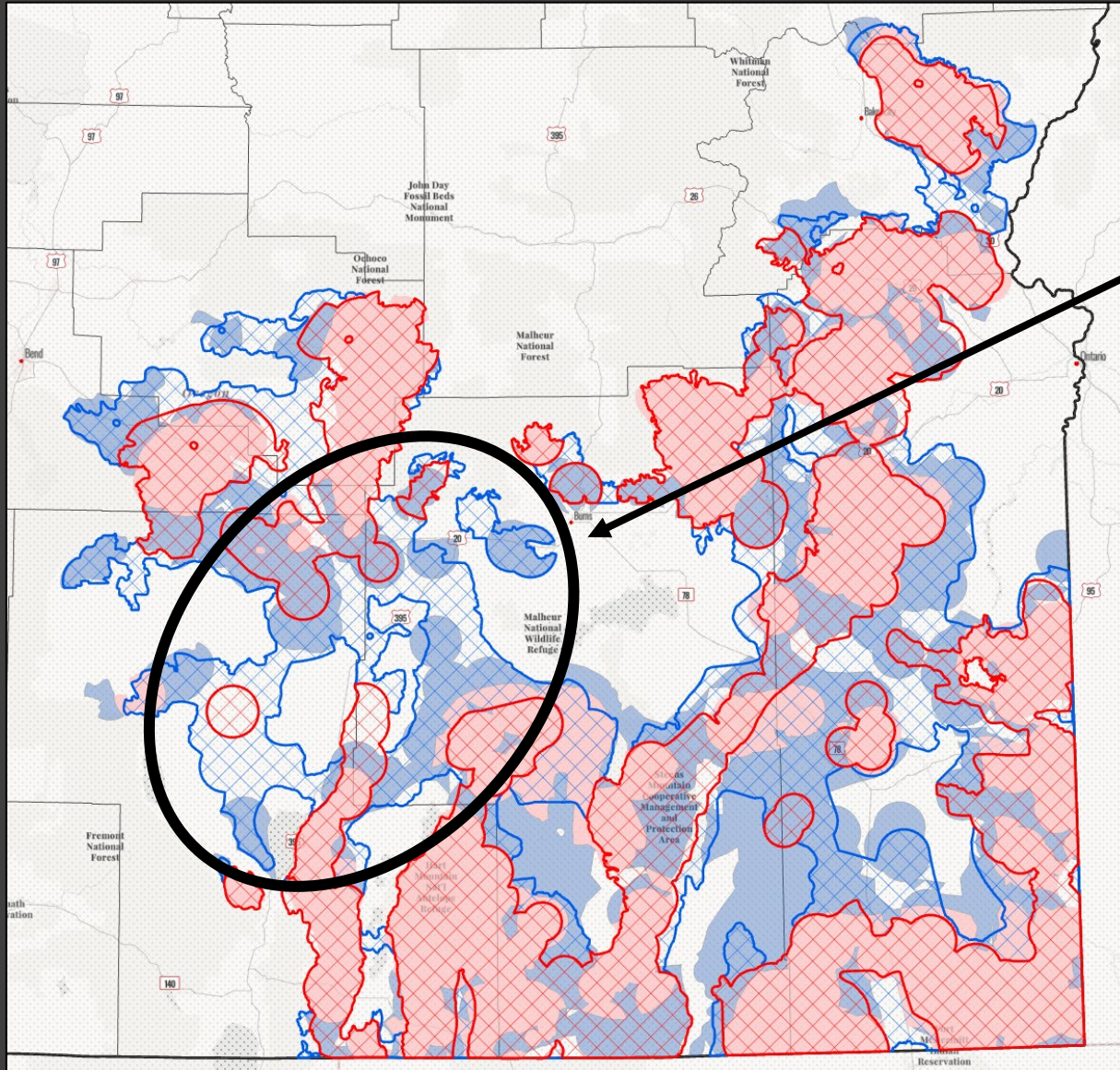
Revised

Low-Density





The Key Differences



Additional core and low-density

2011
Core



2011
Low-Density



Revised
Core

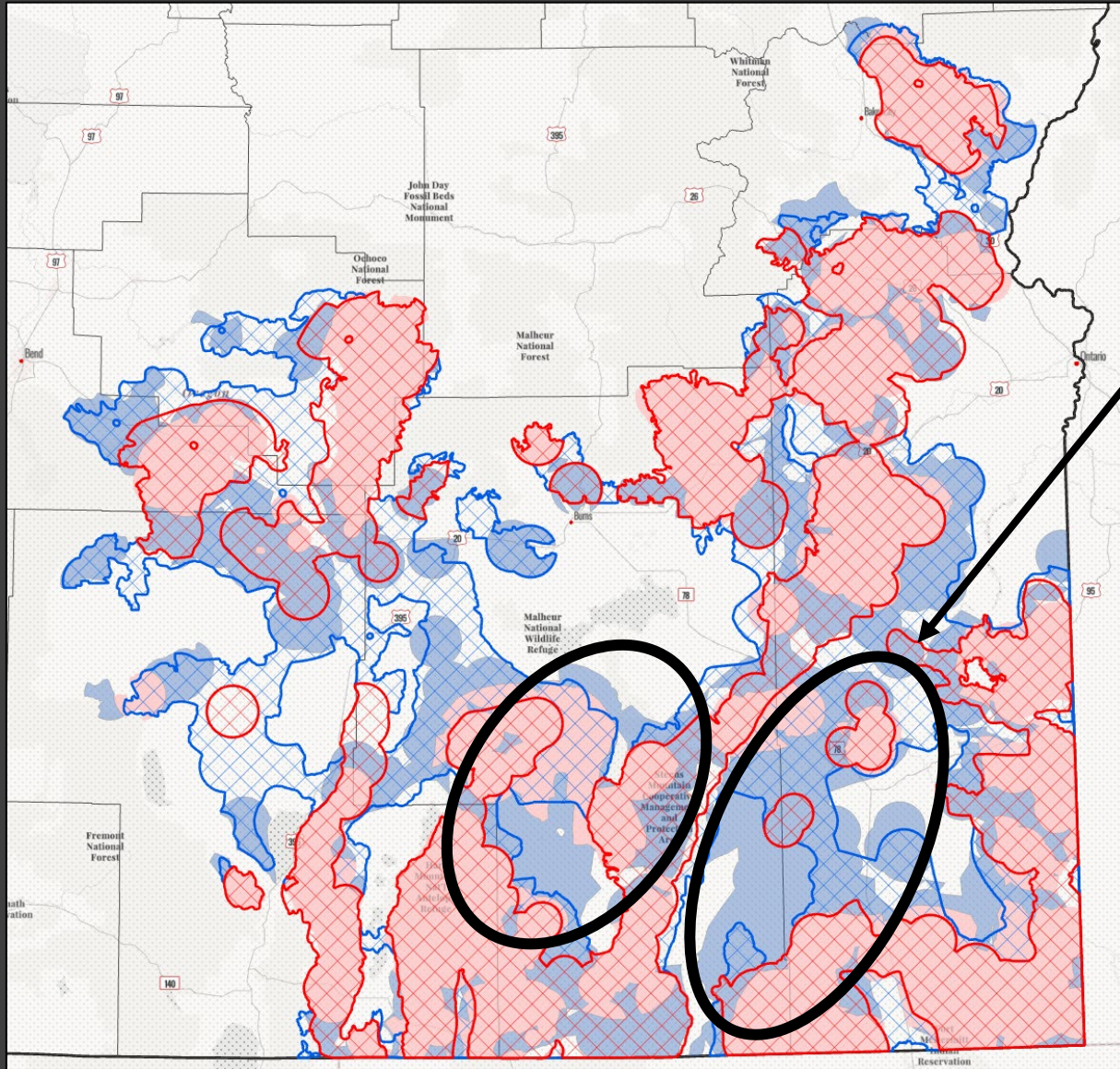


Revised
Low-Density



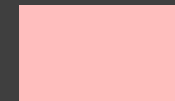


The Key Differences



Less core and low-density

2011
Core



2011
Low-Density



Revised
Core



Revised
Low-Density





Next Steps

- Update Conservation Assessment and Strategy
- BLM and NRCS – waiting on updated map
- DLCD OAR 660-023-0115 points to ODFW's map





Photo: Keith Kehl

Staff Recommendation:

Approve the revised Oregon Sage-grouse Core and Low-Density Habitat Map (2023) as shown in Attachment 3 and amend OAR Chapter 635 Division 140 as proposed by staff and shown in Attachment 4.